



## 17555

### Minimatic® Fittings Kit



- 10-32 Extension Fitting 15010
- 1/8" M NPT to 1/8" ID Hose Adapter 11924-1
- Adjustable 10-32 L Fitting 15002-1
- 10-32 X Fitting 15002-4
- Female 10-32 Hex Connector 15004
- 10-32 M to 1/8" ID Hose with Swivel 15045
- 1/4" M NPT to 10-32 F Adapter 15006-3
- 1/8" NPT to 10-32 T 15090-2
- 10-32 T Fitting 15002-3
- 10-32 M Short Coupling 11999
- 10-32 to 1/8" ID Hose Fitting 11752-3
- Gasket 11761-2
- 12 Port Manifold MAN-12
- Clippard 1/4" & 5/16" Wrench 11770
- 1/8" M NPT to 10-32 F Adapter 15006-1

#### Contains:

- 1/8" NPT to 10-32 L 15090-1
- 10-32 L Fitting 15002-2
- 10-32 Screw Plug 11755
- 10-32 to 1/16" ID Hose Fitting 11752-2

## 17555-QC1

### Minimatic® Quick Connect Kit



- 3/8-24 Nuts 0107-48 Lockwasher 0302-43
- 1/8" F NPT Valve MJQC-VFP
- 1/4" M NPT Valve MJQC-VMQ
- 1/8" M NPT Valve MJQC-VMP
- 1/8" M NPT Cap MJQC-CMP
- 1/4" M NPT Cap MJQC-CMQ
- 1/8" ID Hose Valve MJQC-VB4
- Panel Mount 10-32 F Valve MJQC-VFT
- Panel Mount 10-32 M Valve MJQC-VMT
- 10-32 F Cap MJQC-CFT
- 1/8" ID Hose Cap MJQC-CB4
- Gasket 11761-2
- Hose Samples
- Clippard 1/4" & 5/16" Wrench 11770
- 10-32 M to 1/8" ID CT4
- UTO-4 UTO-4004

#### Contains:

- 1/8" ID T Connector T44-4
- Panel Mount 10-32 F Cap MJQC-CPF
- Panel Mount 1/8" ID Hose Cap MJQC-CPB



# CLIPPARD HOSE & TUBING

**hose** \ `hōz \ *n* : a flexible tube for conveying gases or fluids

**tubing** \ `t(y)u-bing \ *n* : a stiff material in the form of a tube used for conveying gases or fluids

## Do you use a garden tube?

The answer to the question of whether to call it a tube or a hose rests on a fine line, one many people have gotten tangled up in. In both definitions it clearly states that a tube and a hose are used for conveying fluids, yet sometimes one word seems to fit the situation (and the application) better than the other. So remember...

*It's a hose when it's flexible and a tube when it's not.*

Clippard offers a variety of miniature hose and tubing from copper and nylon tubing to flexible urethane, vinyl and Buna-N hose. The chart below lists these products and their available colors and lengths.

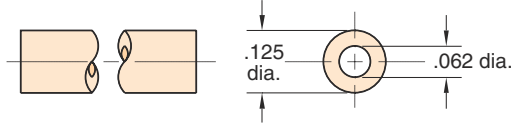
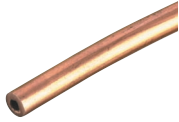


□	-	□	-	□	-	□
<p><b>Hose or Tubing Type</b></p> <p><b>NYT1</b> - single nylon tubing</p> <p><b>VYH1</b> - single vinyl hose</p> <p><b>VYH2</b> - dual vinyl hose</p> <p><b>URH1</b> - single 85 duro. urethane hose</p> <p><b>URH2</b> - dual 85 duro. urethane hose</p> <p><b>URH8</b> - ribbon 85 duro. urethane hose</p> <p><b>URT1</b> - single 95 duro. urethane tubing</p> <p><b>PET1</b> - single polyethylene tubing</p>	<p><b>Size: OD x ID</b></p> <p><b>0402</b> - 1/8 x 1/16</p> <p><b>0403</b> - 1/8 x 3/32</p> <p><b>0503</b> - 5/32 x 3/32</p> <p><b>0804</b> - 1/4 x 1/8</p> <p><b>0805</b> - 1/4 x .160</p> <p><b>1208</b> - 3/8 x 1/4</p> <p><b>Metric Sizes</b></p> <p><b>0604M</b> - 6mm x 4mm</p>	<p><b>Colors: Solid</b></p> <p><b>BLS</b> - blue</p> <p><b>BKS</b> - black</p> <p><b>BRS</b> - brown</p> <p><b>GNS</b> - green</p> <p><b>GYS</b> - gray</p> <p><b>NAS</b> - natural</p> <p><b>ORS</b> - orange</p> <p><b>RDS</b> - red</p> <p><b>WHS</b> - white</p> <p><b>YLS</b> - yellow</p> <p><b>01S</b> - GYS/BKS (dual only)</p>	<p><b>Translucent</b></p> <p><b>BLT</b> - blue</p> <p><b>CLT</b> - clear</p> <p><b>GNT</b> - green</p> <p><b>PUT</b> - purple</p> <p><b>ORT</b> - orange</p> <p><b>RDT</b> - red</p> <p><b>YLT</b> - yellow</p> <p><b>02T</b> - BLT/GNT/GYS/ORT/PUT/RDT/WHS/YLT (ribbon only)</p>	<p><b>Available Lengths</b></p> <p><b>050</b> - 50 ft roll</p> <p><b>500</b> - 500 ft spool</p>		

This chart is to be used as an explanation of our ordering system. See individual listings following this page for sizes and colors available.

## 3811-1

1/8 O.D. Copper Tubing



**Material:** High pressure copper

**Working Pressures:** to 2500 psig

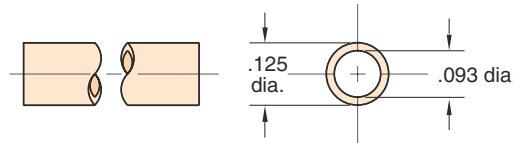
**Static Burst Pressure:** over 10,000 psig

**Lengths Available:** 50 ft

**Use With:** Ferrule tubing connectors #'s: 3810-1  
3810-2  
11923

## NYT1-0403-CLT-□

1/8 O.D. Nylon Tubing  
(Former Part No. 3814-2)



**Material:** Semi-flexible nylon tubing

**Color:** Clear / Translucent

**Working Range:** to 250 psig

**Static Burst Pressure:** Approx. 1000 psig

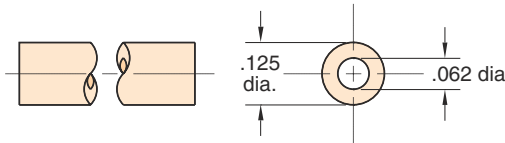
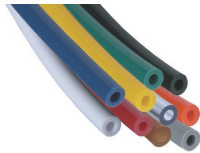
**Use With:** Ferrule tubing connectors : 11923  
3810-1  
3810-2

**Forming:** May be formed into sharp corners with heat

**Lengths Available:** 50 and 500 feet

## VYH1-0402-□-□

1/8 O.D. Miniature Vinyl Hose  
(Former Part No. 3814-5)



**Type:** Flexible, durable vinyl plastic hose

**Working Range:** 0 to 105 psig at 70°F maximum 60 psig at 80°F or above (max. temp. 100°F)

**Color:** Solid: Gray, yellow, red, blue, green, black, white, brown, orange  
Translucent: Clear

**Use With:** Hose Fittings: 11752-2 and clamp 5000-4

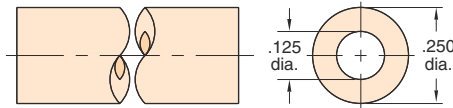
**Lengths Available:** 50 and 500 feet

**Note:**

Specify color on order, and use full product number (including code letters for color) as shown in price list. If no color is specified, clear will be furnished.

## VYH1-0804-□-□

1/4 O.D. Vinyl Hose  
(Former Part No. 3814-1)



**Working Range:** 0 to 105 psig at 70°F maximum 60 psig at 80°F or above (max. temp. 100°F)

**Use With:** Hose fittings: 11752-1, 11752-3 and 11924  
Hose clamps: 5000-2

**Bend Radius:** 3x hose dia.

**Color:** Solid: Gray, yellow, red, blue, green, black, white  
Translucent: Clear

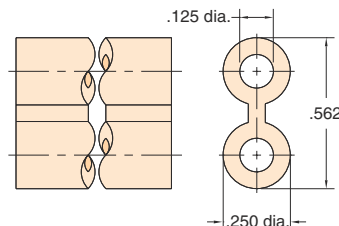
**Lengths Available:** 50 and 500 feet

**Note:**

Specify color on order, and use full product number (including code letters for color) as shown in Price List. If no color is specified, clear will be furnished.

## VYH2-0804-01S-□

Twin Vinyl Hose  
(Former Part No. 3814-3)



**Type:** Flexible, durable vinyl plastic hose, but two hoses molded together, one side has rib entire length for identification

**Color:** Solid: Gray / Black

**Use Clamp:** 5000-1

**Working Range:** 0 to 150 psig at 70°F maximum 60 psi at 80°F or above (max. temp. 100°F)

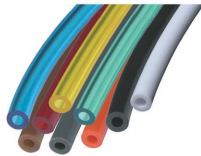
**Use:** Ideal for feeding supply in on one line and out on the other, reduces labor; makes neat assembly; may be parted with any sharp cutting edge

**Lengths Available:** 50 and 500 feet

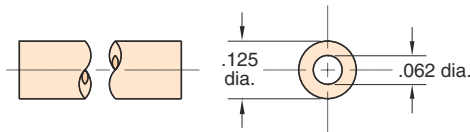


# CLIPPARD HOSE & TUBING

## URH1-0402-□-□



1/8 O.D. Polyurethane Hose  
(Former Part No. 3814-7)



**Working Range:** 0 to 105 psig at 100°F Maximum 120°F

**Static Burst Pressure:** Over 500 psig at 70°F

**Color:** Solid: Black, brown, white, gray  
Translucent: Clear, blue, green, orange, red, yellow

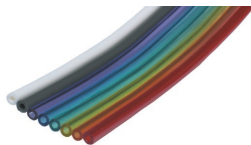
**Lengths Available:** 50 and 500 feet

**Note:** In normal application hose clamps are not required with hose when used with Clippard hose barb fittings

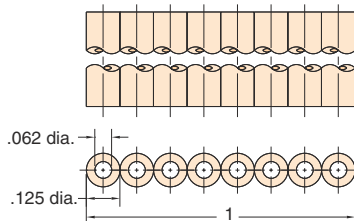
**Note:**

Specify color on order, and use full product number (including code letters for color) as shown in Price List. If no color is specified, clear will be furnished.

## URH8-0402-02T-□



1/8 O.D. Polyurethane Ribbon Hose  
(Former Part No. 3814-9)



**Type:** Flexible, durable urethane hose

**Working Range:** 0 to 105 psig at 100°F maximum 120°F

**Static Burst Pressure:** Over 500 psig at 70°F

**Color:** Solid: Gray, white  
Translucent: Blue, green, orange, purple, red, yellow

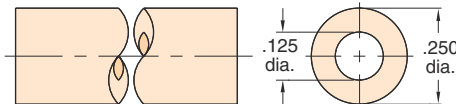
**Lengths Available:** 50 feet

**Note:** In normal application, hose clamps are not required with hose when used with Clippard hose barb fittings

## URH1-0804-□-□



1/4 O.D. Polyurethane Hose  
(Former Part No. 3814-6)



**Working Range:** 0 to 105 psig at 100°F Maximum 120°F

**Static Burst Pressure:** Approximately 425 psig at 70°F

**Color:** Solid: Black, brown, white, gray  
Translucent: Clear, blue, green, orange, red, yellow

**Lengths Available:** 50 and 500 feet

**Bend Radius:** 2x hose dia.

**Note:** In normal application hose clamps are not required with hose when used with Clippard hose barb fittings

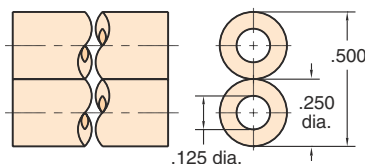
**Note:**

Specify color on order, and use full product number (including code letters for color) as shown in price list. If no color is specified, clear will be furnished.

## URH2-0804-01S-□



1/4 O.D. Twin Polyurethane Hose  
(Former Part No. 3814-13)



**Working Range:** 0 to 105 psig at 100°F

**Static Burst Pressure:** Approximately 425 psig at 70°F

**Color:** Solid: Gray and black combination

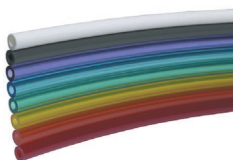
**Lengths Available:** 50 and 500 feet

**Bend Radius:** 2x hose dia.

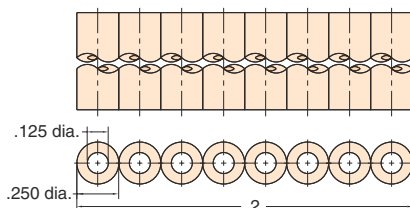
**Use:** Ideal for feeding supply in on one line and out on the other; reduces labor; makes neat assembly; may be parted with any sharp cutting edge

**Note:** In normal application, hose clamps are not required with 3814-13 hose when used with Clippard hose barb fittings

## URH8-0804-02T-□



1/4 O.D. Polyurethane Ribbon Hose  
(Former Part No. 3814-12)



**Type:** Flexible, durable urethane hose

**Working Range:** 0 to 105 psig at 100°F maximum 120°F

**Static Burst Pressure:** Over 500 psig at 70°F

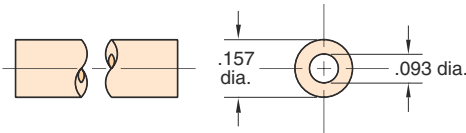
**Color:** Solid: Gray, white  
Translucent: Blue, green, orange, purple, red, yellow

**Lengths Available:** 50 feet

**Note:** In normal application, hose clamps are not required with hose when used with Clippard hose barb fittings

## URT1-0503-□-□

5/32 O.D. 95D Urethane Tubing  
Flexible, durable ether based tubing



**Working Range:** 0 to 105 psig at 100°F Maximum 120°F

**Static Burst Pressure:** Over 500 psig at 70°F

**Color:** Solid: Black, gray, orange, red, white  
Translucent: Blue, clear, green, red, yellow

**Lengths Available:** 50 and 500 feet

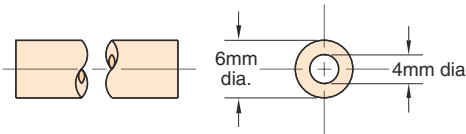
**Note:** Designed for use with push-in fittings.

**Note:**

Specify color on order, and use full product number (including code letters for color) as shown in Price Lst. If no color is specified, clear will be furnished.

## URT1-0604M-□-□

6mm O.D. 95D Urethane Tubing  
Flexible, durable ether based tubing



**Working Range:** 0 to 105 psig at 100°F Maximum 120°F

**Static Burst Pressure:** Over 450 psig at 70°F

**Color:** Solid: Black  
Translucent: Blue, clear, green, red

**Lengths Available:** 50 and 500 feet

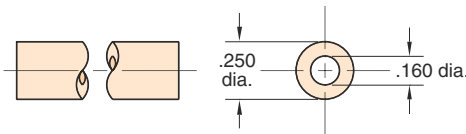
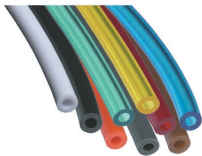
**Note:** Designed for use with push-in fittings.

**Note:**

Specify color on order, and use full product number (including code letters for color) as shown in Price Lst. If no color is specified, clear will be furnished.

## URT1-0805-□-□

1/4 O.D. 95D Urethane Tubing  
Flexible, durable ether based tubing



**Working Range:** 0 to 105 psig at 100°F Maximum 120°F

**Static Burst Pressure:** Over 450 psig at 70°F

**Color:** Solid: Black, gray, orange, red, white  
Translucent: Blue, clear, green, red, yellow

**Lengths Available:** 50 and 500 feet

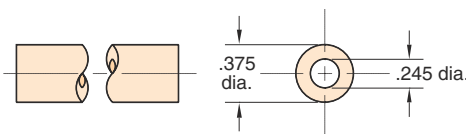
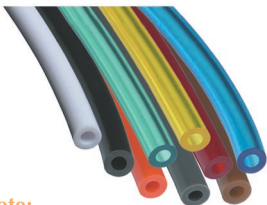
**Note:** Designed for use with push-in fittings.

**Note:**

Specify color on order, and use full product number (including code letters for color) as shown in Price Lst. If no color is specified, clear will be furnished.

## URT1-1208-□-□

3/8 O.D. 95D Urethane Tubing  
Flexible, durable ether based tubing



**Working Range:** 0 to 105 psig at 100°F Maximum 120°F

**Static Burst Pressure:** Over 440 psig at 75°F

**Color:** Solid: Black  
Translucent: Blue, clear, green, red

**Lengths Available:** 50 and 500 feet

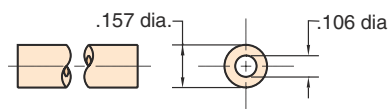
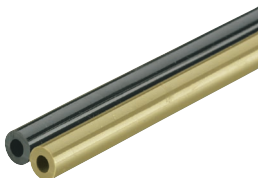
**Note:** Designed for use with push-in fittings.

**Note:**

Specify color on order, and use full product number (including code letters for color) as shown in Price Lst. If no color is specified, clear will be furnished.

## PET1-0503-□-□

5/32 O.D. Polyethylene Tubing  
Linear low density tubing



**Working Range:** 0 to 105 psig at 100°F Maximum 120°F

**Static Burst Pressure:** Over 540 psig at 75°F

**Colors:** Solid: Black or Natural

**Lengths Available:** 50 and 500 feet

**Bend Radius:** 1/2"

**Note:** Designed for use with push-in fittings.

**Note:**

Specify color on order, and use full product number (including code letters for color) as shown in price list. If no color is specified, natural will be furnished.

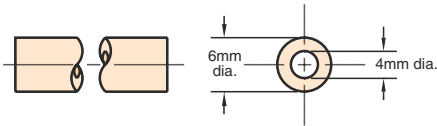


# CLIPPARD HOSE & TUBING

## PET1-0604M-□-□



6mm O.D. Polyethylene Tubing  
Linear low density tubing



**Working Range:** 0 to 105 psig at 100°F Maximum 120°F  
**Static Burst Pressure:** Approximately 560 psig at 75°F  
**Colors:** Solid: Black or Natural  
**Lengths Available:** 50 and 500 feet  
**Bend Radius:** 1 1/4"  
**Note:** Designed for use with push-in fittings

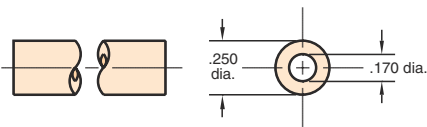
**Note:**

Specify color on order, and use full product number (including code letters for color) as shown in price list. If no color is specified, natural will be furnished.

## PET1-0805-□-□



1/4 O.D. Polyethylene Tubing  
Linear low density tubing



**Working Range:** 0 to 105 psig at 100°F Maximum 120°F  
**Static Burst Pressure:** Approximately 480 psig at 75°F  
**Colors:** Solid: Black or Natural  
**Lengths Available:** 50 and 500 feet  
**Bend Radius:** 1 1/4"  
**Note:** Designed for use with push-in fittings

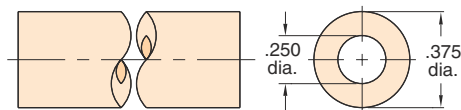
**Note:**

Specify color on order, and use full product number (including code letters for color) as shown in price list. If no color is specified, natural will be furnished.

## PET1-1208-□-□



3/8 O.D. Polyethylene Tubing  
Linear low density tubing



**Working Range:** 0 to 105 psig at 100°F Maximum 120°F  
**Static Burst Pressure:** Approximately 600 psig at 75°F  
**Colors:** Solid: Black or Natural  
**Lengths Available:** 50 and 500 feet  
**Bend Radius:** 2"  
**Note:** Designed for use with push-in fittings

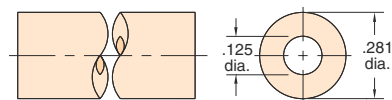
**Note:**

Specify color on order, and use full product number (including code letters for color) as shown in price list. If no color is specified, natural will be furnished.

## 11763-□



9/32 O.D. Braided Hose



**Type:** Flexible Buna-N hose with nylon braid covering  
**Working Range:** 0 to 105 psig  
**Static Burst Pressure:** Approx. 600 psig  
**Color:** Black and yellow combination only  
**Lengths Available:** 50 and 500 feet  
**Use With:** Fittings: 11752-1, 11924  
Clamp: 5000-1A

# CLIPPARD CLAMPS



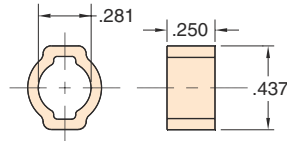
## 5000-1



### Quick Set Hose Clamps

**Type:** Zinc plated steel

**Use:** 5000-1 with Buna N hose  
twin vinyl hose



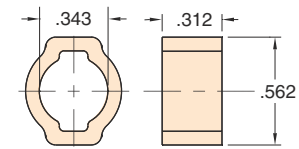
## 5000-1A



### Quick Set Hose Clamps

**Type:** Zinc plated steel

**Use:** 5000-1A with braided hose



## 5000-2



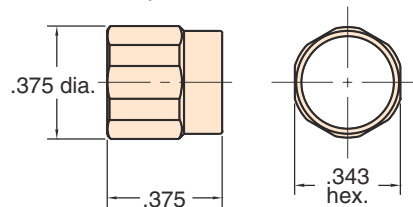
### Reusable Hose Clamps

**Material:** Brass, self-threading, reusable

**Use With:** 11765 Buna-N hose 3814- vinyl hose and  
Clippard hose fittings

**Installation:** Slip sleeve over hose, push onto fitting,  
then screw into place; tighten with wrench

**Options:** (-NP)



## 5000-4



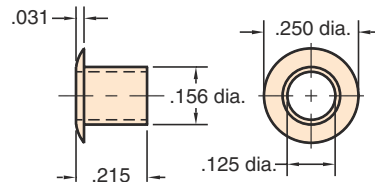
### Press-On Hose Clamp

**Material:** Brass, press-on hose clamp

**Use:** for 3814-5 hose 1/16 I.D. vinyl

**Installation:** Simply place hose clamp over hose with  
flange end out; then press hose partially onto fitting,  
then slide clamp back toward fitting to secure

**Options:** (-NP)



## Polyethylene vs Vinyl vs Polyurethane

Polyurethane offers a wider range of chemical compatibility than Vinyl, it may be used at much higher temperatures and clamps are not needed when used with barb fittings. Linear low density polyethylene offers a lower cost alternative to polyurethane and superior environmental stress crack resistance over standard polyethylene. Both polyurethane and polyethylene are FDA approved.

## Typical Hose & Tubing Bend Radii

When using hose or tubing, care should always be taken to avoid sharp bends to prevent compressing the inside diameter of the hose or tubing and restricting flow. For extremely close connections, allow a short loop of hose to avoid crimping.

Clippard Hose or Tubing		I.D.	O.D.	Min. Bend Radius
3811-1	Copper Tube	1/16"	1/8"	3 x dia.
NYT1-XXX	Nylon Tubing	3/32"	1/8"	3 x dia.
VYH1-XXX	Vinyl Hose	1/16"	1/8"	3 x dia.
VYH1-XXX	Vinyl Hose	1/8"	1/4"	2 x dia.
VYH2-XXX	Dual Vinyl Hose	1/8"	1/4"	2 x dia.
URH1-XXX	85 Duro. Urethane Hose	1/16"	1/8"	2 x dia.
URH8-XXX	Ribbon 85 Duro. Urethane	1/16"	1/8"	-
URH1-XXX	85 Duro. Urethane Hose	1/8"	1/4"	2 x dia.
URH2-XXX	Dual 85 Duro. Urethane	1/8"	1/4"	3 x dia.
URH8-0804-XXX	Ribbon 85 Duro. Urethane	1/8"	1/4"	-
URT1-0503-XXX	95 Duro. Urethane Tubing	3/32"	5/32"	3 x dia.
URT1-0604M-XXX	95 Duro. Urethane Tubing	4mm	6mm	2 x dia.
URT1-0805-XXX	95 Duro. Urethane Tubing	.160	1/4"	2 x dia.
URT1-1208-XXX	95 Duro. Urethane Tubing	.245	3/8"	3 x dia.
PET1-0503-XXX	Polyethylene Tubing	.106	5/32"	3 x dia.
PET1-0604M-XXX	Polyethylene Tubing	4mm	6mm	5 x dia.
PET1-0805-XXX	Polyethylene Tubing	.170	1/4"	5 x dia.
PET1-1208-XXX	Polyethylene Tubing	1/4"	3/8"	5 x dia.
11763	Braided Hose	1/8"	9/32"	2 x dia.

